



THE ARISTA

3, 4 BHK & SKYVILLAS
VISHAL NAGAR, PIMPLE NILAKH



A GLOWING LIFESTYLE



Crafting is an artful process that embodies precision, creativity, and dedication, resulting in products that stand out for their quality and craftsmanship. It ensures each element is thoughtfully shaped and perfected, resonating with authenticity and excellence. It's the essence of turning potential into brilliance. Founded by visionaries with over 30 years of combined experience, Cristallo Infra specializes in crafting over just constructing.

THINGS THAT
Shine...
ARE USUALLY CRAFTED



A DECADE OF CRAFTING
SPACES THAT SHINE!!!



AT A POLISHED ADDRESS OF Pimple Nilakh

Pimple Nilakh embodies a lifestyle of elegance and modernity, having evolved significantly over the years. This vibrant suburb is synonymous with luxury living, featuring premium amenities and robust infrastructure. Strategically located in Western Pune, Pimple Nilakh offers unparalleled convenience with its proximity to key commercial hubs, bustling marketplaces, trendy shopping centres, prestigious educational institutions, and sophisticated dining venues.





WHEREVER YOU
GO, BECOMES A
Part
OF YOU SOMEHOW

WHY PIMPLE NILAKH?



A prime location in
Pimpri-Chinchwad



Move-in-ready ecosystem
for relaxed living



Exceptional civic
amenities



Dynamic social
infrastructure



Outstanding connectivity
to everything necessary

Authenticity

It goes beyond superficial appearances or trends, delving into the culture and community that make each place distinct. This location cherishes its natural landscapes, architectural landmarks, and local traditions. We are here to actively contribute to enhancing the authenticity of the location through a multifaceted approach.



Reflection

Reflection is a fundamental aspect of personal growth and community development. It's a way to grow personally and understand yourself and others better. We are about to enhance the locale's aesthetic appeal and also provide moments of respite from the bustle of urban life, encouraging individuals to reflect on their experiences and aspirations.



Independence

It is a cherished state of being. It's an environment where all members feel valued, supported, and empowered. We are an inclusive community where every voice is heard, and every individual is emboldened.

Solidarity

The bond that brings individuals together in shared purpose, values, and aspirations. A community where mutual support and shared values enrich the lives of all who call it home. We aim to cultivate a vibrant environment where solidarity is a lived experience.



Thoughtfulness

A quality that enriches interactions, decisions, and environments. At its core, thoughtfulness encourages mindfulness and sensitivity to the complexities of human experience. It inspires us to create inclusive spaces for meaningful dialogue, collaboration, and collective growth.

Aspiration

The driving force behind personal growth and collective progress. Something propels us toward our dreams, inspiring us to reach beyond and strive for excellence. We strive to transform aspirations into reality, building a space where dreams can flourish and the potential for a brighter future is limitless.



ARTIST'S IMPRESSION

GLOWING
Lifestyle
INSIDE OUT

A SINGLE
Iconic
HIGH-RISE TOWER

An Expansive Land
Parcel of
27,000 sq. ft.

Ultra-luxe
precisely crafted
3, 4 BHK Apartments
& SkyVillas.

Elevated living
overlooking Lush Green
No Development Zone.

Infinity Pool
On 18th Floor.

Approximately
25,000 Sq. Ft.
Of Exclusive
Amenities
On Five Different
Levels

Spacious Living
Units Ranging From
1210 Sq. Ft. To 2705 Sq. Ft.

A Thriving
Community With Over
60 Apartments

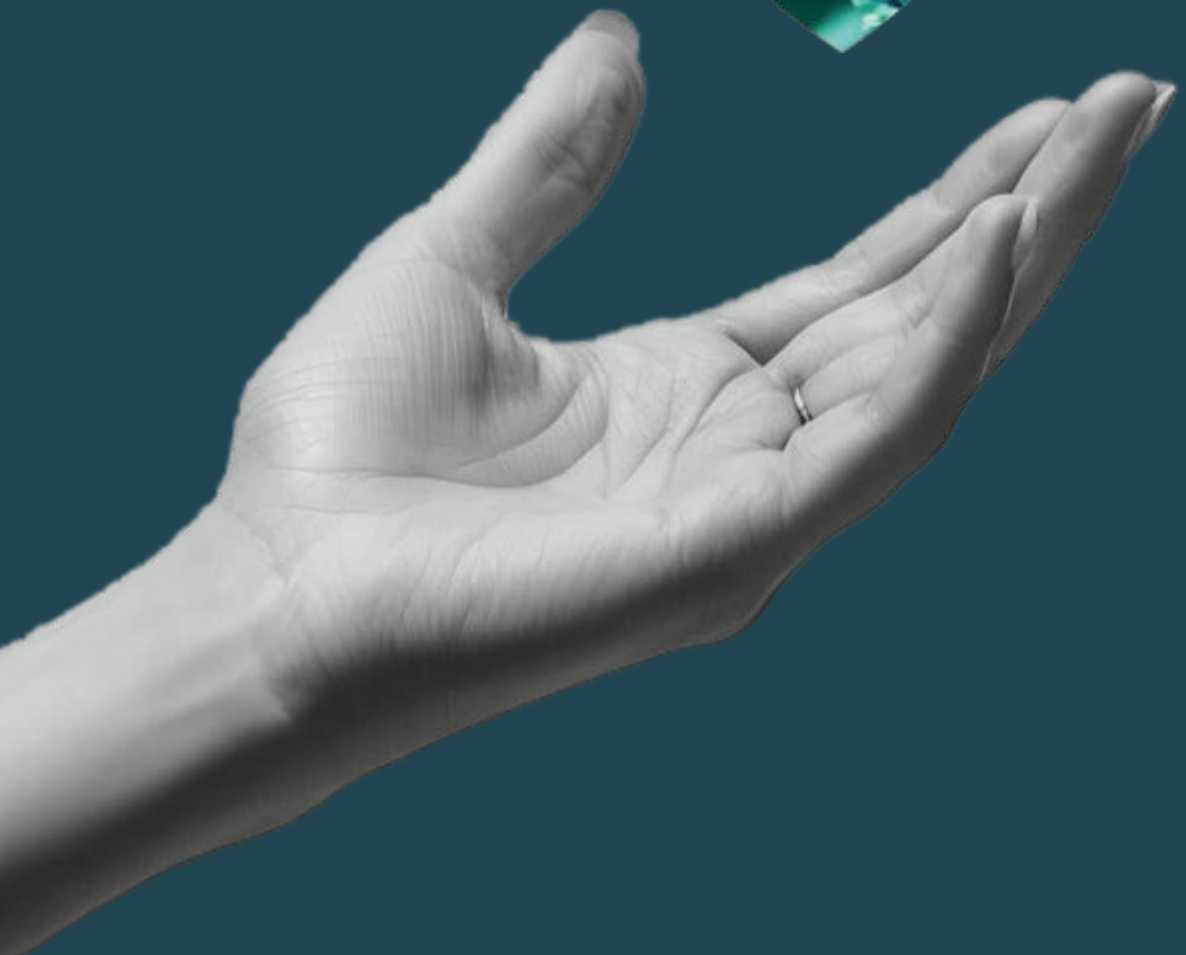
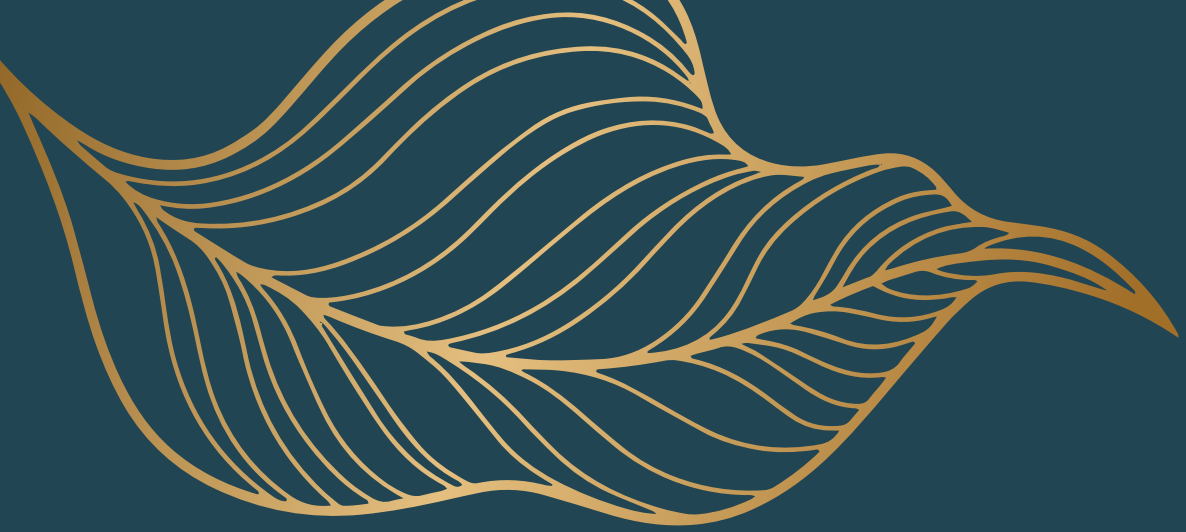
UNLEASHING THE
Extraordinary



An aerial, isometric-style rendering of a modern high-rise apartment building. The building is a tall, rectangular structure with a light beige facade and dark grey accents. It features numerous balconies with glass railings and a rooftop terrace with greenery. The building is situated in a dense urban environment with many smaller, multi-story buildings surrounding it. A large, lush green forest with various trees and some flowering plants is in the foreground, partially obscuring the base of the building. The scene is captured from a high angle, looking down at the building and the surrounding city. The lighting suggests a warm, golden hour, with long shadows and a soft glow. The overall aesthetic is clean, modern, and aspirational.

WITH UNOBSTRUCTED
Views...
That Glow

AN EYE-PLEASING PALETTE FOR A LIFETIME



AN EXPERIENCE
Tailored
TO YOUR PREFERENCE

3 BHK
STARTING FROM
1210 CARPET

4 BHK
STARTING FROM
1664 CARPET

3 BHK
SKYVILLAS
2154 CARPET

4 BHK
SKYVILLAS
2705 CARPET





INTERIORS HOSTING
Nature's
BREATH-TAKING
WALK



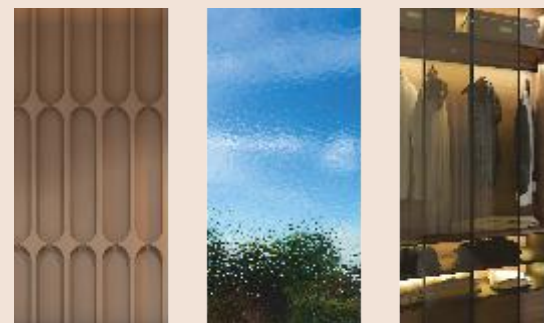
LIVING ROOM

ARTIST'S IMPRESSION



ROOMS PAINTING THE
Hues of Sky

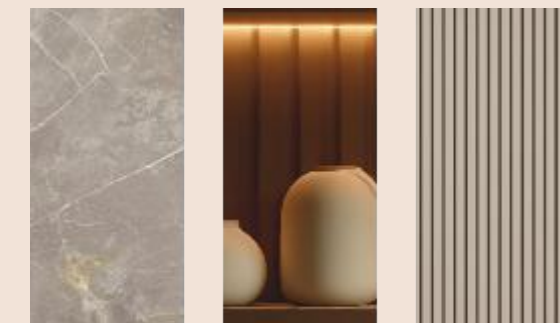
MASTER BEDROOM





SPACES SEASONING
EVERYDAY WITH

Magic



KITCHEN

ARTIST'S IMPRESSION



THE BEST AMENITIES
AREN'T THINGS, THEY ARE
Experiences

It's the feeling of profound satisfaction that comes from being in an environment where every detail is designed with your comfort in mind. Experiences in this environment evoke a deep sense of fulfilment, inspiring moments of reflection and connection. After all, luxury comes from the emotional richness of living in a place that continually uplifts your spirit.

25+ luminous
lifestyle
amenities

EXPERIENCES CRAFTED FOR THE LIFE
YOU'VE ALWAYS IMAGINED



Opulent Heights, Tranquil Green Views

Experience the Infinity Pool on the 18th floor, offering breathtaking views of lush greenery with open land opposite. This serene oasis provides a refreshing escape amidst nature, ensuring an unmatched sense of tranquility and relaxation.



INDOOR PLAY AREA & CRECHE

Our Indoor Play Area & Crèche offers a safe and engaging environment for your little ones to explore and play. Equipped with age-appropriate toys, it ensures fun and security. Enjoy peace of mind knowing your children are well-cared for and entertained.



LAWN & BARBEQUE AREA

Discover the perfect spot for outdoor gatherings in our beautifully landscaped Lawn Area approx. 2800 sq. ft. & Barbeque Ideal for family picnics and social events, this space offers a serene environment with modern barbeque facilities. Enjoy memorable moments and delicious meals under the open sky, surrounded by lush greenery.



MULTI-PURPOSE HALL

Experience versatility at its best in our Multi-Purpose Hall, designed to accommodate a variety of events from celebrations to community gatherings. Featuring flexible seating arrangements and modern amenities, it offers the perfect venue for all your occasions. Whether hosting parties or meetings, create memorable moments in this spacious and adaptable setting.

LIBRARY & CO-WORKING SPACE

Explore the tranquility of our Library and Coworking Space, a haven for both reading enthusiasts and remote workers alike. Immerse yourself in a collection of books or enjoy productive work sessions in a serene environment equipped with modern amenities. Whether seeking knowledge or productivity, find inspiration in this versatile space designed for comfort and focus.





MINI THEATRE

Escape into entertainment bliss in our Mini Theatre, a cozy enclave designed for cinematic enjoyment with family and friends. Featuring comfortable seating and cutting-edge audiovisual technology, it promises an immersive movie experience. Whether for movie nights or private screenings, indulge in unparalleled viewing pleasure in this intimate setting.



INDOOR GAMES

Discover endless fun in our Indoor Games area, perfect for friendly competitions and leisurely play. Equipped with a variety of games like table tennis, foosball, and board games, it offers entertainment for all ages in a comfortable environment. Enjoy quality time with family and friends in this lively space designed for indoor recreation.



FULLY EQUIPPED GYM

Elevate your fitness routine in our Gym, boasting panoramic views of lush green surroundings for an inspiring workout experience. Equipped with state-of-the-art facilities and set against a backdrop of natural beauty, it offers a refreshing ambiance to achieve your fitness goals. Enjoy unparalleled motivation and tranquility as you exercise with a view.

MINI SQUASH COURT

Experience adrenaline-pumping matches in our Mini Squash Court, designed for enthusiasts seeking competitive play and fitness. Featuring state-of-the-art facilities and a professional-grade court, it offers an invigorating environment for players of all levels. Sharpen your skills and enjoy intense workouts in this dedicated space for squash enthusiasts.





ARISTA ZONE

Welcome to Arista Zone, a top-floor sitting area offering stunning views of lush greenery. Enjoy a serene and relaxing atmosphere, perfect for unwinding and savoring the natural beauty.



DESIGNER GUEST ROOMS

Experience the Designer Guest Room, where luxury and comfort blend seamlessly. Enjoy a stylish stay with a refined atmosphere, ensuring a memorable and restful experience.



MULTI-PURPOSE COURT

Discover our Multipurpose Court, designed for a variety of sports and activities. Whether it's basketball, tennis, or volleyball, enjoy a versatile space perfect for staying active and having fun.

CHILDREN'S PLAY AREA

Explore a safe and fun space designed for endless adventures. With modern equipment and a vibrant environment, it's the perfect place for kids to play, learn, and grow.





Amenities Beyond Expectations

OPEN SPACE

1. Multi-Purpose Court
2. Children Play Area
(Multi station Equipment)
3. Lawn
4. Sit-out / Gazebo

AMENITY FLOOR

5. Multi-purpose Hall
6. Indoor Game Area
 - a. Air Hockey
 - b. Table Tennis
 - c. Pool Table

- d. Chess Table
- e. Carrom Table
- f. Cards Table
- g. Foosball

7. Space For Conducting
Hobby Classes
8. Mini Theatre
9. Indoor Kids Play Area & Creche
10. Mini Squash Court
11. Gym
12. Arista Zone



EVERYTHING FROM Zen to Zest

1. Infinity Pool
2. Gazebo/ Viewing Decks
3. Yoga /Zumba Deck
4. Children Play Area
5. Changing Rooms
 - A. Female Changing Rooms
 - B. Male Changing Rooms
6. Pantry
7. Pebble Pathway
8. Party Lawn
9. Barbeque Area

Specifications

FLOORING

- **Living, Kitchen, Dining, Passage:** Glazed Vitrified Tiles - 1600 mm X 800 mm
- **Master Bedroom:** Wooden Texture Tile / Planks - 200 mm X 1200 mm
- **Other Bedroom:** Glazed Vitrified Tiles - 1600 mm X 800 mm
- **Attached Terrace/Balcony:** Anti-skid Wooden Finish Tiles - 200 mm X 1200 mm

KITCHEN

- **Kitchen Platform:** Granite/ Full Body Vitrified Tile
- **Dado:** 2 Feet Above Counter
- **Sink:** S S Sink with Drain Board
- **Water Purifier:** Adequate Points

FALSE CELING

- In Attached Terrace/Balcony

DOORS & WINDOWS

- **Main Door:** Pre-Laminated Factory made Flush Door of 8 Feet Height
- **Internal Door:** Pre-Laminated Factory made Flush Door of 8 Feet Height
- **Windows & Attached Balcony :** UPVC Sliding Windows & Doors with Mosquito Mesh

WALL FINISHES

- **Interior:** Gypsum Finished Ceiling & Walls with OBD Paint
- **Exterior:** Texture finish Acrylic Paint

RAILING

- **Attached Terrace/Balcony:** S.S. Glass Railing
- **Staircase:** M. S. Railing

INTERNAL ELECTRIFICATION

- **Switches & Wiring:** Modular Switches of Schneider, Legrand or Equivalent with Concealed Copper Wiring Polycab or Equivalent
- **Light Points & Power Points:** Adequate Power / Light Points Provided
- **Power Back-up:** Provision of Invertor
- **TV:** TV Points Provided in Living & all Bedrooms
- **Broadband:** Provision in Living & Dining Lobby Area

TOILETS

- **Flooring:** 600 mm x 600 mm Anti-Skid Tile Flooring
- **Dado:** Glazed Vetrified Tile 1200 mm X 600 mm upto Lintel Level
- **Sanitary ware:** Jaquar, Kohler or Equivalent
- **CP Fittings:** Jaquar, Kohler or Equivalent
- **Shower Column with Rain Shower:** Master Bedroom Only - Jaquar, Kohler or Equivalent
- **False Ceiling:** Modular False Ceiling/Acrylic False Ceiling
- **Concealed Flush Tank:** Provided
- **Solar Water Connection:** Provided - Master Bedroom Only

LIFTS

- Passenger Lift & Stretcher Lift

HOME AUTOMATION / SECURITY SYSTEMS

- Video Door Phone
- Fire Sprinkler & Smoke Detector
- Motion Sensor Light in all Bathrooms
- Main Door Digital Lock
- DG Backup for Common Area
- FTTH Network Provision
- DTH Provision

PLUMBING

- **Type:** Concealed Anti-Corrosive Plumbing

3 BHK

UNIT PLAN



- 1. ENTRANCE
- 2. KITCHEN
- 3. ENCLOSED DRY BALCONY
- 4. DINING
- 5. LIVING
- 6. LIVING TERRACE
- 7. GUEST BEDROOM
- 8. KIDS BEDROOM
- 9. KIDS BEDROOM WC/BATH
- 10. MASTER SUITE TERRACE
- 11. MASTER SUITE
- 12. MASTER SUITE WC/BATH
- 13. COMMON WC/BATH

DISCLAIMER: Furniture Shown Is For Representational Purpose, Actual Flat Will Be Unfurnished

4 BHK

UNIT PLAN



- 1. ENTRANCE
- 2. KITCHEN
- 3. ENCLOSED DRY BALCONY
- 4. DINING
- 5. COMMON WC/BATH
- 6. MASTER SUITE 1 WC/BATH
- 7. MASTER SUITE 1
- 8. MASTER SUITE 1 TERRACE
- 9. MASTER SUITE 2 WC/BATH
- 10. MASTER SUITE 2 WALK IN WARDROBE
- 11. MASTER SUITE 2
- 12. LIVING TERRACE
- 13. GUEST BEDROOM
- 14. LIVING
- 15. KIDS BEDROOM
- 16. KIDS BEDROOM WC/BATH

DISCLAIMER: Furniture Shown Is For Representational Purpose, Actual Flat Will Be Unfurnished

3 BHK

SKYVILLAS PLAN



DISCLAIMER: Furniture Shown Is For Representational Purpose, Actual Flat Will Be Unfurnished

4 BHK

SKYVILLAS PLAN



DISCLAIMER: Furniture Shown Is For Representational Purpose, Actual Flat Will Be Unfurnished



PRESENCE IS MORE
THAN JUST BEING
THERE. IT'S THE

Impact
YOU MAKE

OUR PRESENCE

RAVET

- Vinayaka Bliss - Phase 1
- Vinayaka Bliss - Phase 2

KOTHRUD

- Koyna Apartment (Redevelopment) Mayur colony
- Pallavi Apartment (Redevelopment) Mayur colony

NASHIK

- Blue Ocean Row house Phase 1 Row Houses, Adgaon naka
- Blue Ocean row house Phase 2 Row House, Adgaon naka
- Blue Ocean vista Commercial and residential

VISHAL NAGAR

- Balwadkar Vihar
- Balwadkar Residency's
- Shubhamkaroti
- Sky view in Balewadi



BEHIND EVERY
BEAUTIFUL CRAFT, ARE
HANDS WHO MAKE IT

Happen...



CREDITS

Design Architect:

Cubix Architects

RCC Consultant:

G A Bhilare Consultants Private Limited

Project Management:

Bricklane India

Liasoning Architect:

Patil & Bugade Associates

Landscaping & Interior:

Sparc Design

MEP:

Siddhivinayak MEP Consultants

Legal Advisor:

SRS Advocate & Associates

Strategic Partner:

Ace Prime Infra

Designing & Marketing:

Shubh Advertising

3D Visualization:

Qurious Design Pvt. Ltd.



A Project By



Site Address: Sr. No. 24, 'The Arista', Near Shiv Mandir, Vishal Nagar, Pimpri-Chinchwad - 411027

Telephone: 95400 26026 | Mail: sales@thearista.com | Website: www.cristallo.com



MahaRERA Registration No.: P52100055954 | <http://maharera.mahaonline.gov.in>

Disclaimer: This is not an offer, an invitation to offer and/or commitment of any nature. This contains artistic impressions and stock images for illustrative purpose and no warranty is expressly or impliedly given that completed development will comply in any degree with such artist's impression as depicted. All specifications of the flat shall be as per the final agreement between the Parties. Recipients are advised to use their discretion in relying on the information/amenities described/shown therein.

